

RAID FACILITY SOP

SOP

RANGE DESCRIPTION

RAID FACILITY is comprised of one main administrative building and two (2) radar dishes (inactive). Entire area is fenced in.

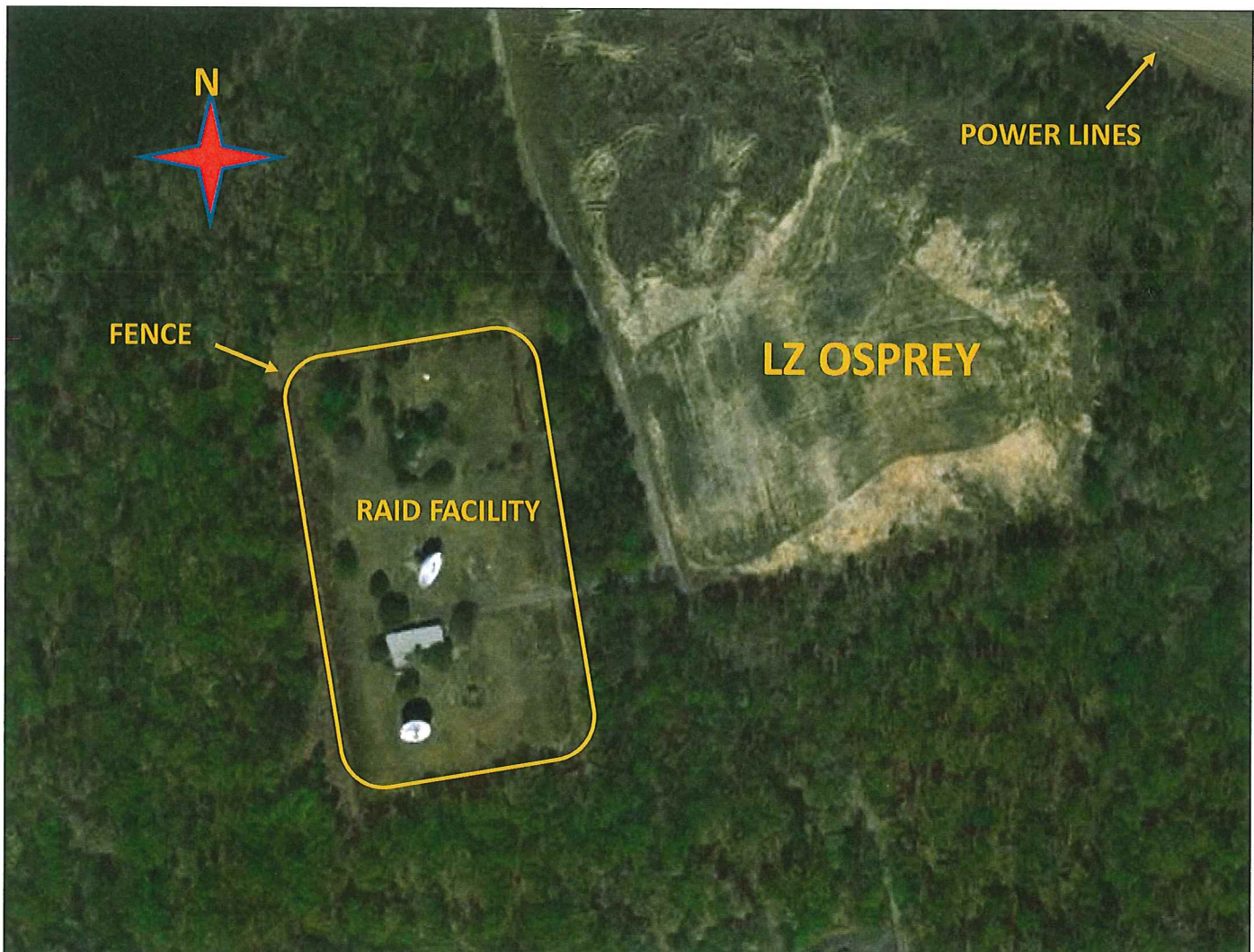
STATUS: Active
LOCATION: 86207818

RANGE USES:

Primary Use: Used for conducting raid/small scale urban training.
Alternate Use: NONE

PRIMARY DIRECTION OF FIRE: N/A

RAID FACILITY





WEAPONS ACCOMMODATED:

- Blank firing weapons
- Simmunitions (SESAMS) or paint guns
- Small explosive breaching charges <3.5lbs

AMMUNITION AUTHORIZED:

- Blank ammunition
- Smoke grenades
- Water-soluble marking ammunition (SESAMS/Paintball)
- Small explosive breaching charges <3.5lbs

TARGETS/SIMULATORS/DEVICES: None

PRIMARY DIRECTION OF FIRE: None

RANGE USE RESTRICTIONS/COMMENTS:

1. Only the weapons and ammunition listed in this document will be used at this training facility.
2. All MCB Quantico Range Regulations and SOPs must be adhered to.
3. No small arms live fire at Raid Facility. SESAMS, paintball and blank only.
4. Paintball marks must be removed prior to securing.
5. SESAMS force-on-force training will not take place when the temperature is below 38 degrees. SESAMS firing at targets is authorized below 38 degrees.
6. Refer to SOUM 1-02 for SESAMS training guidelines.
7. Traffic on the raid facility road accessing the FBI tower training facility to the south must be monitored during SESAMS training and restricted while actual firing is taking place.
8. Riot control gas is not authorized (MCBO 3570).
9. Fires are not allowed within any structures.
10. Police of all brass and trash must be performed prior to the post-inspection. All doors and windows closed.
11. Small fence breaching charges of under 3.5 lbs. net explosive weight are authorized for units with MOS-qualified breachers and a mission requirement for breaching operations.
12. The breaching charges will be placed on the perimeter fence only. **Fence will be repaired using fencing repair materials (not concertina) prior to departing the Raid facility.**

13. Proper PPE level will be worn at all times (breaching and SESAMS).
14. The facility will be inspected for any unused demolitions once training is complete.
15. Breaching operations will be secured during inclement weather involving electrical storms.
16. Non-pyrotechnic IEDs will not be used or mixed with pyrotechnics or explosives.
17. No foreign objects will be left in the facility after training is complete.
18. Any communication/concertina wire or any other obstacles will be removed and properly secured prior to the unit being allowed to check out of the area.
19. Climbing on radar dishes or antenna tower is prohibited.
20. Furniture and materials inside the administrative building are for support of the facility/exercise. Removal or damage of such property is prohibited.
21. Units that do not occupy their range within two hours of their scheduled occupy time will lose the use of that range for that day.
22. Units that have requested contractor support (i.e., automated targets, PITS targets, battlefield effects simulators, etc.) that are not present on the specified range within 1 hour of the requested time and have not contacted RMB/TSCQ will forfeit all contracted support for the day.
23. Units that have occupied a range with approved contractor support (i.e., automated targets, PITS targets, battlefield effects simulators, etc.) and that have not begun to use that support within 2 hours of the requested hour of operation will forfeit all contracted support for the day.
24. Units that are training with contractor support (i.e., automated targets, PITS targets, battlefield effects simulators, etc.) that place themselves voluntarily into check fire for 2 hours during the approved support operational hours will forfeit all support for the day.
25. Units that encounter situations where contractor support (i.e., automated targets, PITS targets, battlefield effects simulators, etc.) is delayed or interrupted by circumstances beyond the control of the requesting unit (i.e., RMB directed check fire, ASP support, MEDEVAC, etc.) must contact RMB/TSCQ in order to arrange continued support within the scope of the contract and available assets.

26. If battlefield effects simulators are to be used, the OIC and RSO will be trained on their usage.

FACILITIES (Number of each):

Towers: 0 Sheds: 0 Ammo Breakdown: 0 Parking: Yes

Description of other structures: One main admin building, antenna tower, and two large radar dishes.

UTILITIES AVAILABLE:

Electricity: Yes
Lights: Yes
Water System: No

INSTALLED COMMUNICATIONS: Yes

<u>MEASURED DISTANCES:</u>	<u>MILES</u>	<u>MGRS</u>
TBS	16.2	87106390
ASP	12.1	91256605
EMT/Fire (Fire House 3):	9.3	89606710
Nearest MEDEVAC LZ	0.2	86227818 (LZ Osprey)

LZ Osprey is located across paved road from Raid facility.

CAUTION: If air MEDEVAC, EMS must be briefed on hazards in the Compound.

LASERS AUTH: No unfiltered Class 3B or Class 4. Standard approved aiming devices mounted on service weapons.

AVAILABLE DAYS/HOURS: 362/All

AREA SUITABILITY:

<u>Unit Type</u>	<u>Unit Size</u>	<u>No. of Units</u>
Combat arms	Squad to Company	1
Police		
CQB		

GEOGRAPHICAL DATA:

Access Routes	Rt 646
Soil Type	Clay
Terrain Type	Small hills
Vegetation	Wooded tree line around the complex

COMMUNICATION REQUIREMENTS:

1. A radio check is required immediately upon occupying any portion of the RTA, every 30 minutes in a live fire status and every 3 hours in a non-live fire status.
2. The Range Control Facility (RCF) Fire Desk Net Control call sign is "Range Control". Your call sign is "Range XX" (name of range, training area or facility unit is occupying).
3. The primary RCF Fire Desk Net Control frequencies are: ELMR talk group "RC Safety" (ground) and 323.7 AM UHF (air).
4. The secondary RCF Fire Desk Net Control is telephone, numbers: 703-784-5321 or 5322.
5. OIC/RSO will monitor the RCF primary and secondary Safety Nets at all times. Instant communication is required.
6. Any unit with organic ELMR radios will have their ELMR radios programed with the "RC Safety" talk group and use those radios as their primary means of communication within the RTA.
7. Units without organic ELMR assets will be issued ELMR radios from RMB upon check-in.
8. Approved Non-ELMR radios are only authorized for internal communication (ground).
9. If the RCF cannot reach a unit within the RTA via primary communication, the unit will be contacted via the secondary means of communication.
10. Upon loss of primary communication the OIC/RSO will initiate a "check fire"/cease training status and will contact the RCF via secondary communication. This communication will be maintained while primary communication is being restored. Units may only resume firing/training once primary communication has been re-established and clearance is granted by the RCF.

INJURY CLASSIFICATIONS:

Injuries are classified into the following categories in order to aid in casualty evacuation from the RTA.

1. ROUTINE. Routine injuries are those injuries that are not threatening to life, limb or eyesight; and conditions or illnesses treatable by medication or procedures available at the base medical facilities.

2. PRIORITY. Priority injuries are those injuries that require immediate medical attention but are not threatening to life, limb, or eyesight if treated promptly.


3. URGENT. Urgent injuries are severe injuries that are threatening to life, limb, or eyesight and require immediate medical attention.

4. MASS CASUALTY. A mass casualty is a series of injuries with multiple priority and urgent medical patients.

MEDICAL EVACUATION (MEDEVAC) PROCEDURES:

1. Injury occurs.
2. Range immediately cease-fires.
3. Medical support evaluates/treats injured personnel.
4. Range OIC/RSO notifies the RCF of the injury, is the victim conscious/unconscious and what type of MEDEVAC transportation is requested (ground/air).
5. The OIC/RSO must maintain constant radio contact with Range Control and awaits further instructions.

*Minor injuries and illnesses not requiring medical services need not be reported to the RCF but should be reported in unit training logs.

A handwritten signature in blue ink, appearing to read "J. Wood", is written over a horizontal line.

Range Control Officer

Date: 1 Nov 2018